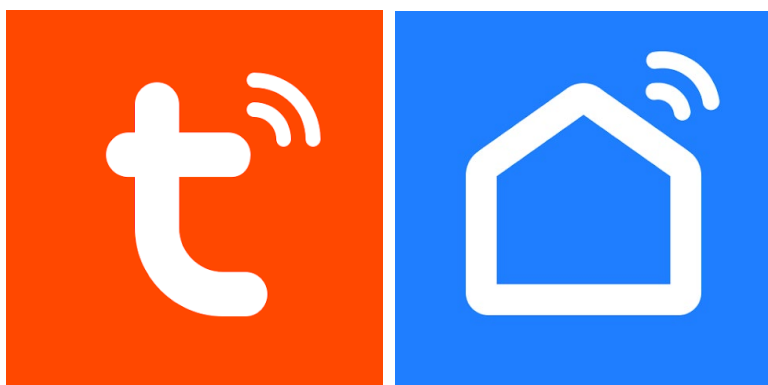




DK Series Cameras

Tuya APP



Tuya Smart and SmartLife App Manual

How to install wifi cameras and use them with Tuya apps



What did you buy?

DK-----TUY series investigative wifi cameras are designed to work on the Tuya home automation platform, one of the most widespread in the world.

With Tuya apps:**Tuya Smart**or**Smartlife**You can connect these cameras easily to your your WiFi network and then control them at will with your mobile phone, even via the Internet. With the same app you can also control all our home automation devices, such as our remote controls and Our Smart Home intercoms that allow you to create your own smart home.

The two Tuya apps are perfectly equivalent and differ only in aesthetics. You can use the one you prefer.

This manual explains how to install and configure the cameras using the app.



Electrical connection cameras

The investigative cameras can operate with continuous mains power or with battery. For explanations on how to physically install the product, refer to the manual of the hardware of the specific model you purchased.

Positioning

Before placing the camera in its final location, remember that this device must connect to your wifi network in order to work. You should therefore check with the cell phone that in the place where you want to put it there is good coverage of your wifi network. If you see that the signal is poor, you should intervene on your wifi network, perhaps by strengthening it with a repeater.

Do not install the product in an area with poor WiFi signal because it would then be unreliable in its operation.

SD card

The cameras can record video to a micro SD card (not included) that you can insert inside. See your hardware manual for instructions on inserting and SD cards supported.

Reset

The cameras are always equipped with a reset button which you can usually find next to of the SD card slot. Depending on the model, it may be hidden behind a hole in which insert a sharp object, or present as a button among the connections. Check the hardware manual to check where the button is located and how to reset it.

Normally, a reset is performed by holding down the button for a few seconds.

You need to do this reset if you want to connect your camera to a new wifi network.

Once the reset is complete, the camera returns to WiFi configuration mode, just like when it is new.

USER MANUAL

Tuya App for DK Series Cameras

Page:4





Download the Smart Life App

To use the camera with your mobile phone you must first connect the device to your network wifi. To do this you need the APP **Smart Life** which you can download for free from Google Play or Apple Store. It is a very popular app in home automation that uses the Tuya platform.



Alternatively you can also download the app **Tuya Smart** which is equivalent.

At the first start you must create an account by entering a valid email address. Press CREATE AN NEW ACCOUNT and then wait for the code via email to confirm your registration.

If you don't have an email address you can also use your phone number by pressing Use Phone Number and get verification code via SMS

Once you have created your account you will have your own space in the cloud where you can upload all your photos. your cameras and also many home automation devices that use the same Tuya platform, like our WiFi remote controls or our WiFi video intercoms.

Load the device into the app

You can upload your camera to the app in different modes depending on the model you have. purchased. Below we explain the 3 available modes:

1 - Self-recognition mode

2 - QR code mode

3 - AP Mode

Normally you will find in the hardware manual an indication of which mode is supported. from your camera



Set the camera to auto-recognize

This is the fastest pairing mode, but it is only supported by cameras that They have Bluetooth.

You will usually find it indicated in your camera's hardware manual whether this supports auto-recognition. In any case you will understand it immediately because the app automatically detects cameras that support this mode, without you having to do anything.

If your camera is not automatically found by the app, it means you need to upload the camera in the app manually in another mode: with qr code, or in AP wifi mode.

Try the auto-recognition mode first, explained in this chapter.

Here's how to set up your camera in auto-recognition mode.

1 – Make sure your phone is connected to your 2.4GHz wifi network (5GHz is only supported) (from some models) and launch SmartLife.

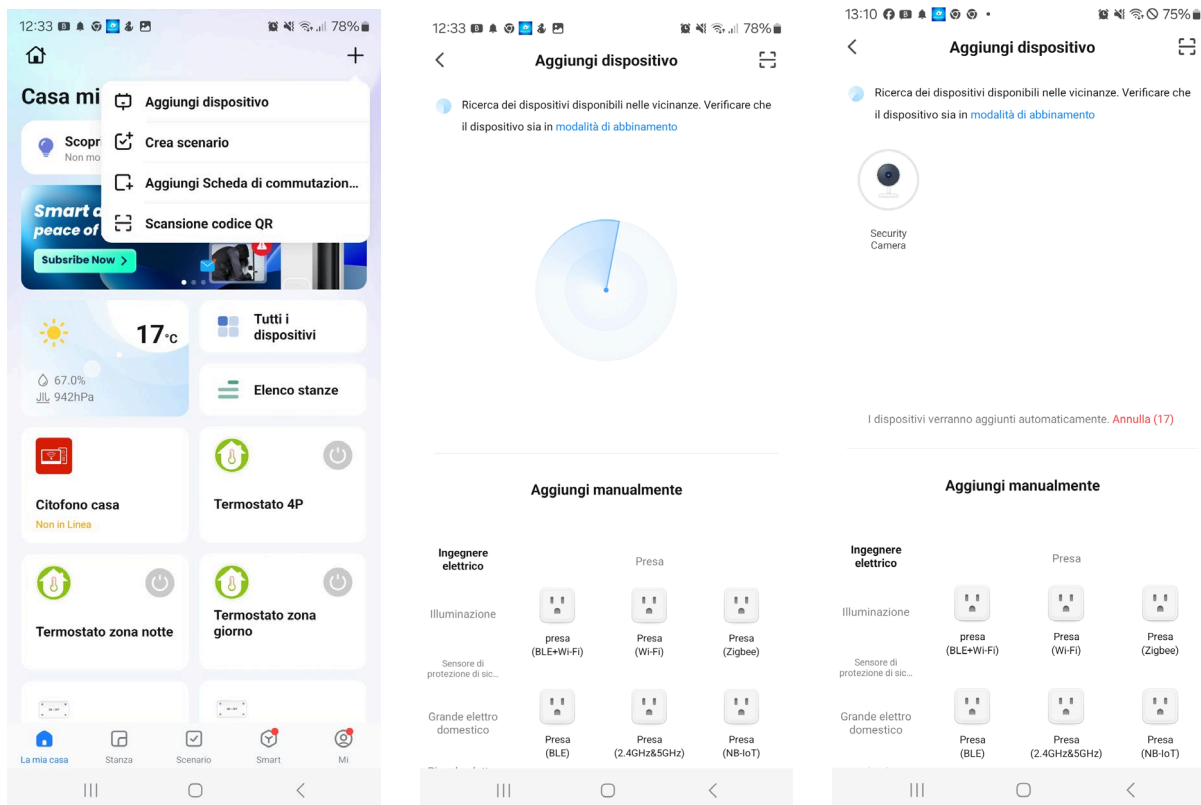
2 – Turn on the camera and wait at least a minute for it to complete the start-up. Once finished of the start the blue LED starts to flash, which indicates that the camera is in waiting for wifi configuration. If the blue LED is solid, perform a reset by holding the button reset for a few seconds.

In cameras without LEDs, the LED function is replaced by a sound in the speaker: the camera makes a startup sound and then a beep, or double beep. periodically. The sound periodic indicates that the camera is waiting for wifi configuration. If you do not hear the periodic beep Perform a reset by holding down the device's reset button for a few seconds.

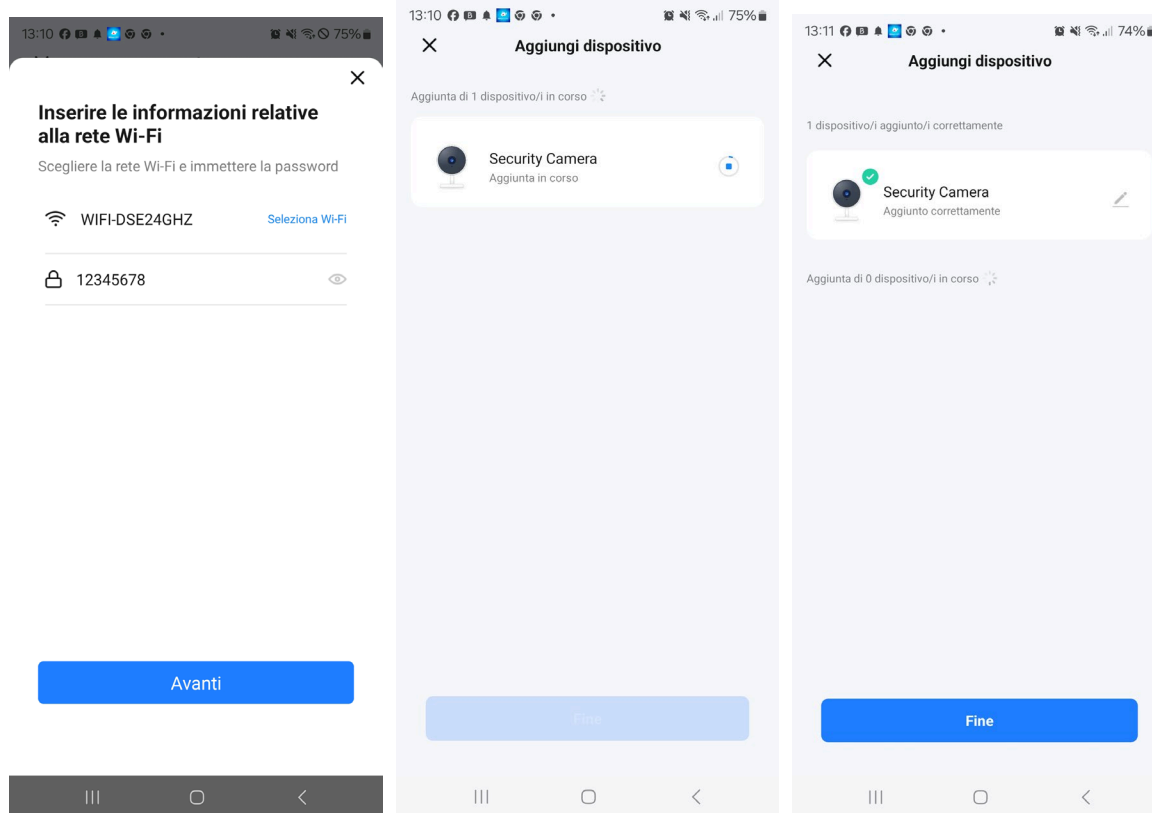
In the hardware manual you can find how your camera signals the configuration waiting state.

3 –**Press ADD DEVICE** or press the + button at the top right and then choose ADD DEVICE. The automatic search will start and will automatically locate the device. camera, if it is in setup standby mode.

If the automatic search does not detect any cameras, press and hold the reset button to reset the camera and try again from point 1. If even after the reset the camera is not detected this means that the camera model does not support self-recognition and you have to proceed with the QR code mode, or AP wifi which are described in the next chapters.



4 – Now select the camera detected by the automatic search, select your wifi network 2.4GHz you want to connect to and enter the login credentials of the wifi network.



FINISHED!

Now the camera is configured and ready to use.

When the camera is configured and connected to wifi and app correctly, **the blue wifi led stops flashing and stays on**. In cameras without LEDs, the sound stops of setup and often a success sound is emitted indicating the connection obtained.

ATTENTION – If the Smartlife app does not detect any cameras while searching for them, device, although the camera is in setup mode, this means that the suit camera does not support auto-recognition and you have to proceed with manual addition with QR code, explained in the next chapter.



Set up the camera with QRcode

To use the camera with your mobile phone you must first connect the device to your network wifi. You must use this mode with QR code, when the camera you purchased is not It is automatically detected by the app and therefore does not support automatic configuration described in the previous chapter.

Normally you can find in the hardware manual which configuration mode is supported.

from your camera, but anyway, if the app doesn't automatically detect your camera,

As in the previous chapter, you should try this QR code mode right away.

Here's how to upload a camera to the app via QR code.

1 – Make sure your phone is connected to your 2.4GHz wifi network (5GHz is only supported) (from some models) and launch SmartLife.

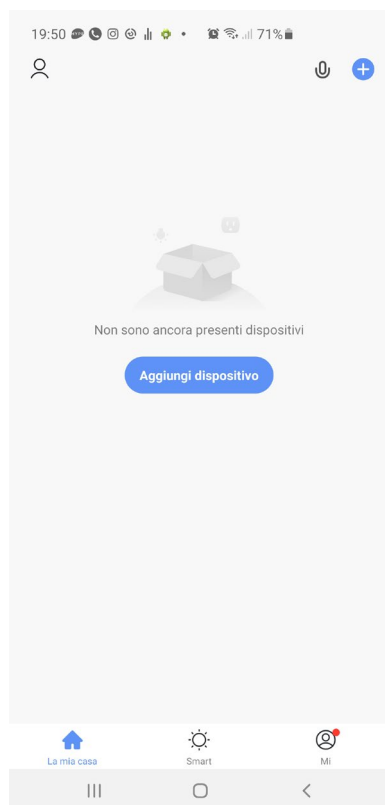
2 – Turn on the camera and wait at least a minute for it to complete the start-up. Once finished of the start the blue LED starts to flash, which indicates that the camera is in waiting for wifi configuration. If the blue LED is solid, perform a reset by holding the button reset for a few seconds.

In cameras without LEDs, the LED function is replaced by a sound in the speaker: the camera makes a startup sound and then a beep, or double beep. periodically. The sound periodic indicates that the camera is waiting for wifi configuration. If you do not hear the periodic beep Perform a reset by holding down the device's reset button for a few seconds.

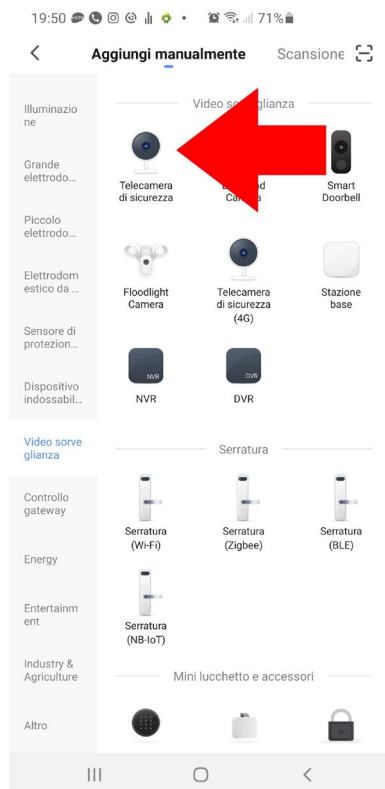
In the hardware manual you can find how your camera signals the configuration waiting state.

Now you are ready to add the device.

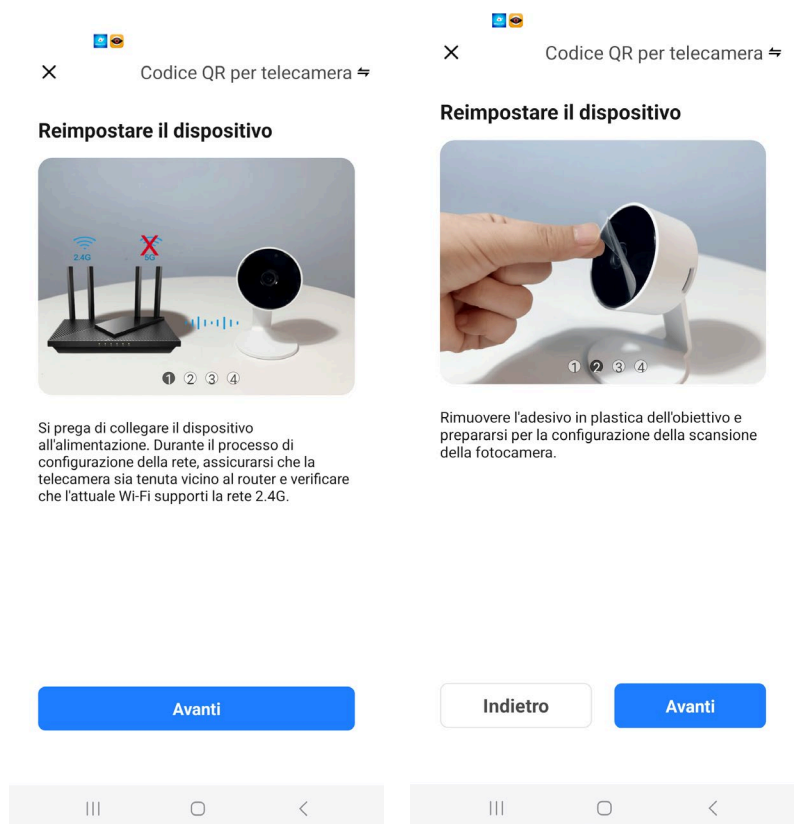
3 – Press ADD DEVICE in the center of the page or press the + sign at the top right and then choose ADD DEVICE.



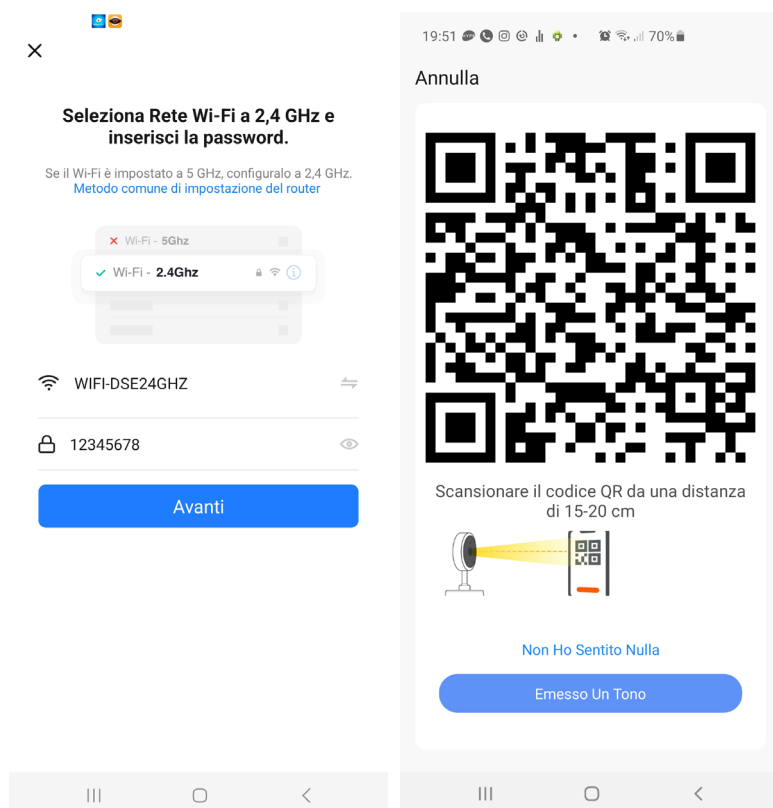
4 – Choose the type of WIFI SECURITY CAMERA device that you find in the VIDEO section
SURVEILLANCE or CAMERA



5 – Press the next button and some information pages will be displayed reminding you to reset the device and remove the protections from the camera lens. Proceed with Continue until the end of the short tutorial and select DONE.



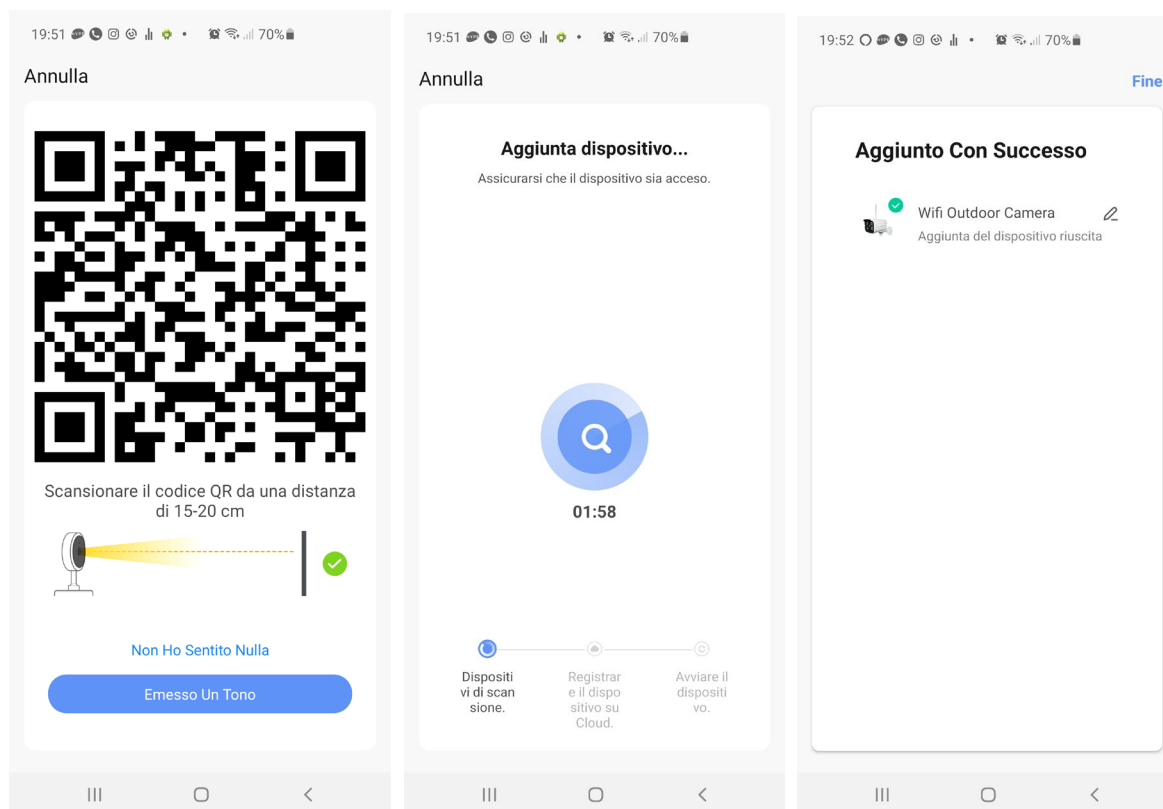
6 – Now you have to **choose your wifi hot spot** to connect to and enter the access password to network. If you have networks with different frequencies, remember that it is better to use a 2.4 GHz WiFi network which is always supported by all cameras. Select the network and enter the access password to the your wifi network. A QR code will appear on the screen.



7 -**Show the QR code to the camera** which appears in the app by placing the phone at a distance 15-20 cm from the camera lens. Slowly move the phone back and forth and right and left so that the camera can scan the QR Code. Insist until that the camera does not emit a short confirmation sound. When you hear the confirmation sound of reading press the TONE button in the app to continue.

Now the app will connect the camera to your wifi network

The camera recording process takes about 30 seconds, during which the camera connects to your WiFi network and is added to your personal area in the Cloud server.



FINISHED!

Now the camera is configured and ready to use.

When the camera is configured and connected to wifi and app correctly, **the blue wifi led stops flashing and stays on**. In cameras without LEDs, the sound stops of setup and often a success sound is emitted indicating the connection obtained.

ATTENTION – If you show the QR code to the camera, but it does not emit any beep tone confirmation, while insisting in front of the lens, it means that your camera does not support the QR code configuration mode and you must therefore use the AP wifi mode described in next chapter.



Set up the camera in AP wifi mode

If the camera you purchased **does not support previous recognition modes automatic and qr code**, it means you need to load the camera into the AP wifi mode app. Here's how to set up the camera in WiFi AP mode.

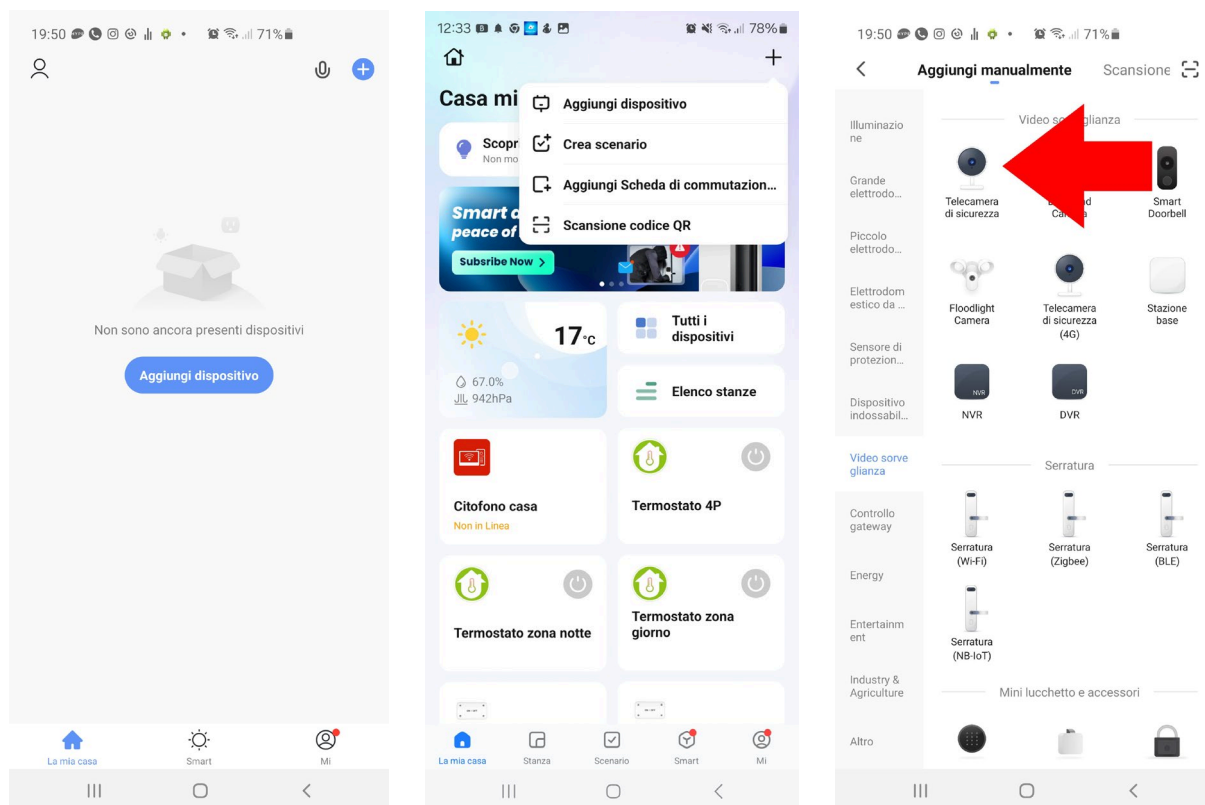
1 – Make sure your phone is connected to your 2.4GHz wifi network (5GHz is not supported) and launch SmartLife.

2 – Turn on the camera and wait at least a minute for it to complete the start-up. Once finished of the start the blue LED starts to flash, which indicates that the camera is in waiting for wifi configuration. If the blue LED is solid, perform a reset by holding the button reset for a few seconds.

In cameras without LEDs, the LED function is replaced by a sound in the speaker: the camera makes a startup sound and then a beep, or double beep, periodically. The sound periodic indicates that the camera is waiting for wifi configuration. If you do not hear the periodic beep Perform a reset by holding down the device's reset button for a few seconds.

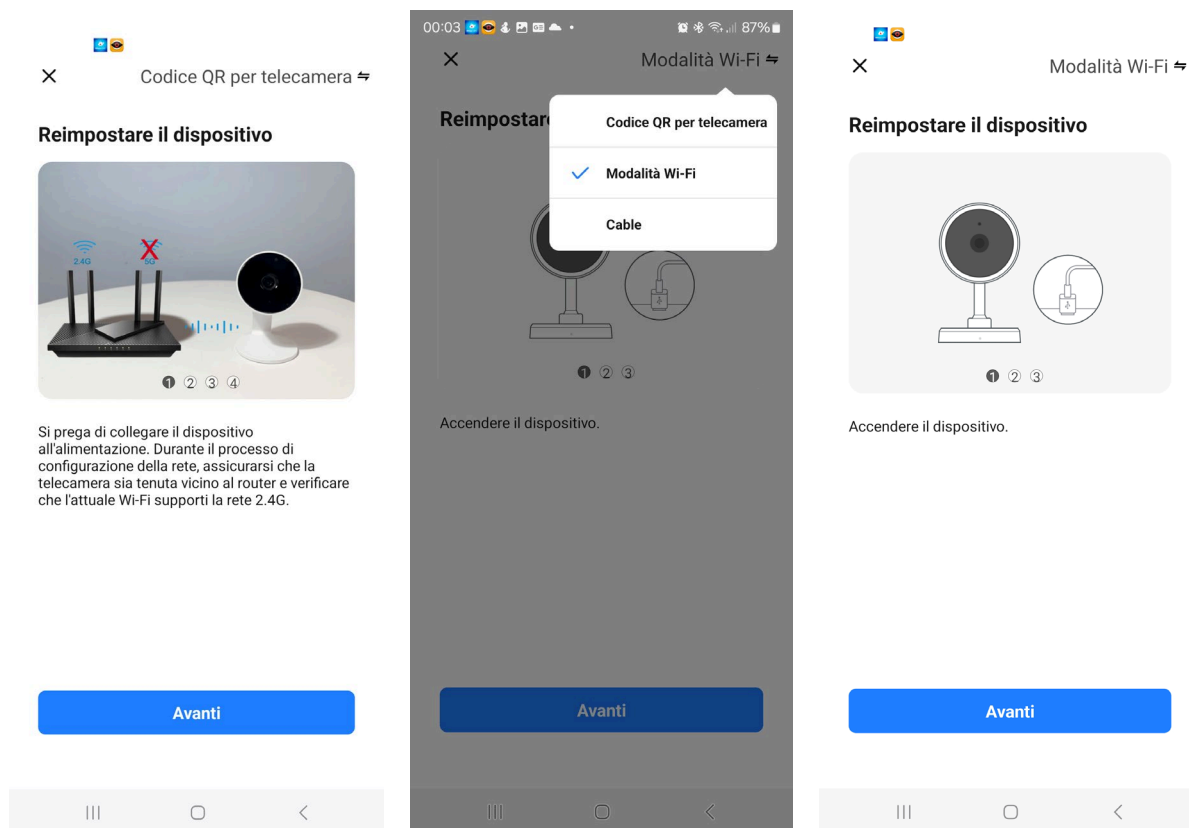
In the hardware manual you can find how your camera signals the configuration waiting state.

3 – **Press ADD DEVICE** or press the + button at the top right and then choose ADD DEVICE. On the next page choose the device type CAMERA WIFI SECURITY which you can find in the VIDEO SURVEILLANCE or CAMERA section



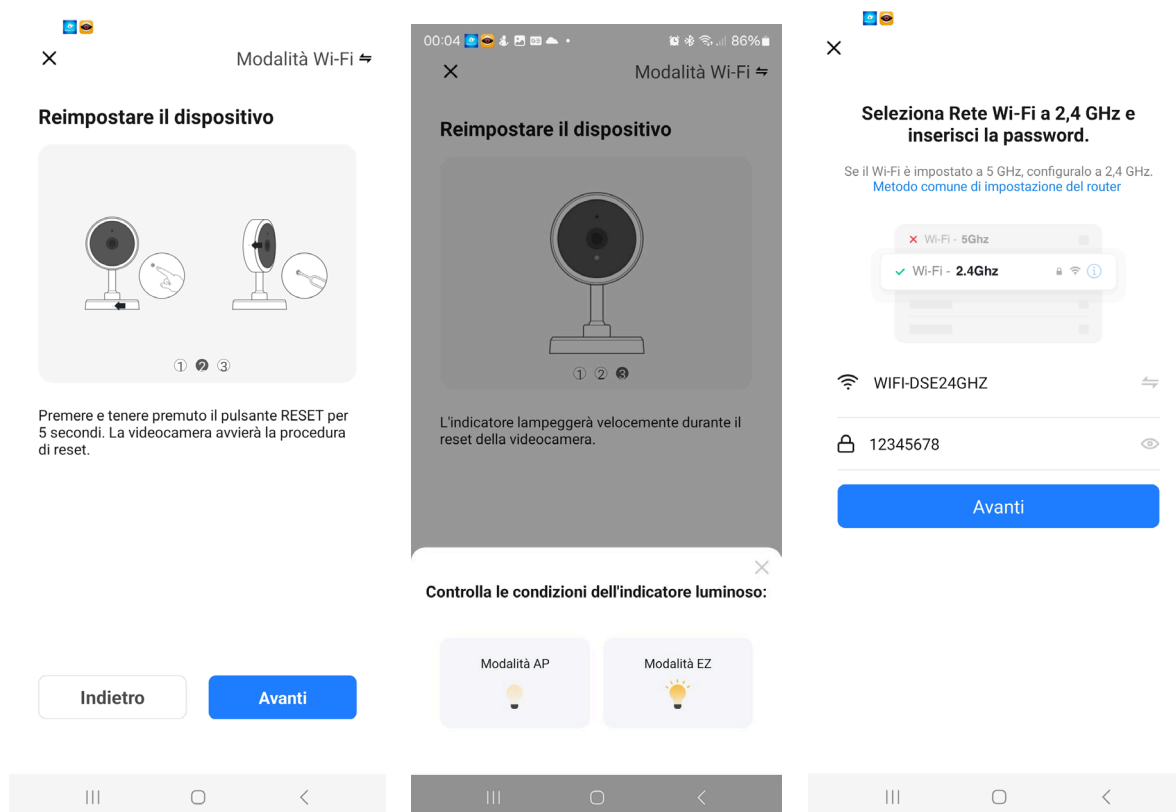
4 – The procedure for adding the device starts. Instead of proceeding with the NEXT button, as in the QR code configuration described above, **tap on the SCAN item**

QR CODE on the top right and choose WIFI MODE in the drop-down menu. This way you are choosing not to use the standard QR code configuration mode, but you decide to use AP WiFi mode

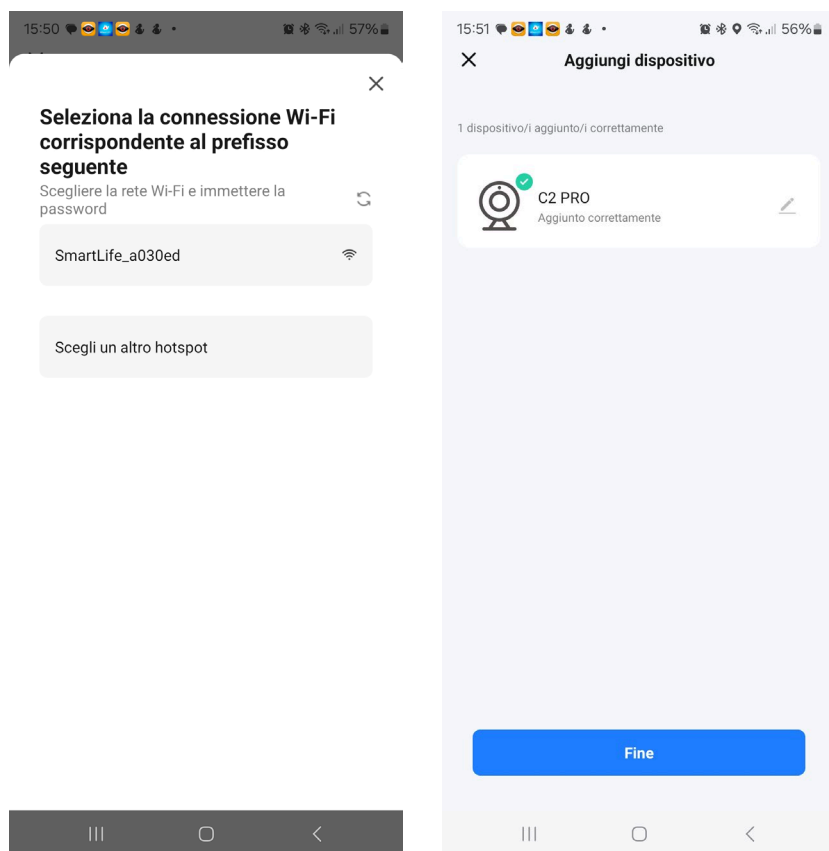


5 – Now press NEXT 3 times, to scroll through a short tutorial that suggests you reset the device. You actually don't need to do this if your camera is already in setup mode.

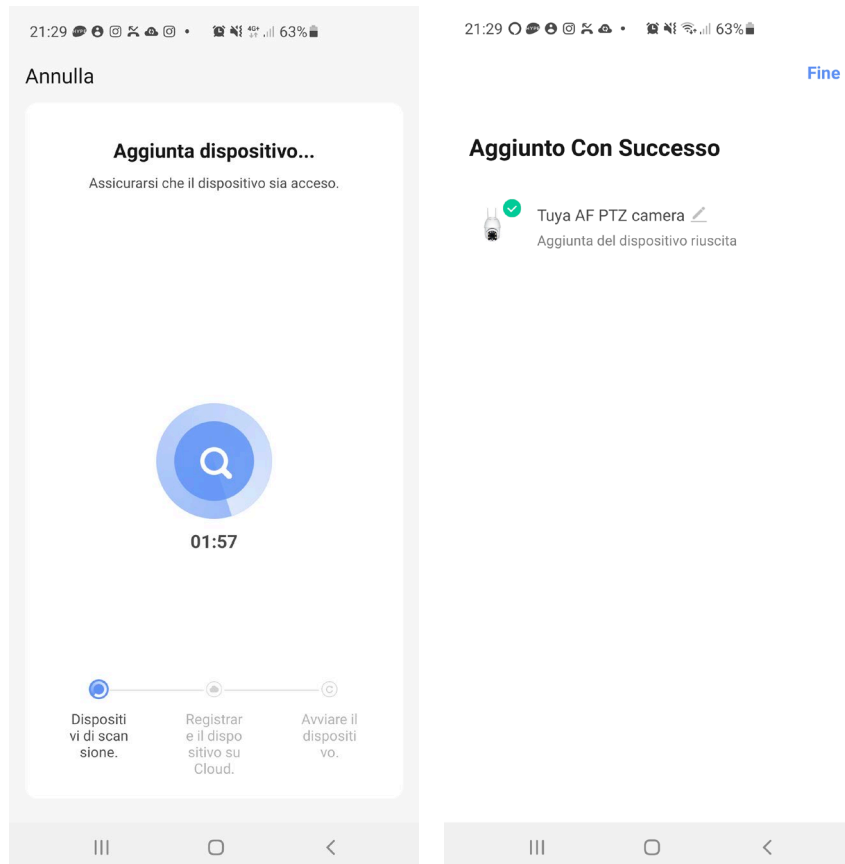
When the AP and EZ mode selection button appears, **select AP MODE**, and in the next window **select your wifi network** to 2.4 GHz you want to connect the camera to by entering the password of the wifi network. Press next.



6 – Now the procedure asks you to connect to the camera's wifi hotspot. You can do this directly from the app, by pressing **CONNECT NOW**. Among the wifi networks, **choose the WiFi network SmartLife camera to connect you.**



6 – Normally the app automatically logs into the camera's network. If your phone does not support this feature, you will have to manually go into connections wifi and connect to the camera's network, then go back to the app and proceed. The camera addition procedure will start and you just have to let it complete.



FINISHED!

Now the camera is configured and ready to use.



Camera Reset

If you want to connect the camera to another wifi network, to use it in another place or because you have changed the router, you need to reset the camera, delete the camera from the app and run the installation procedure again. See your hardware manual on how use the reset button.

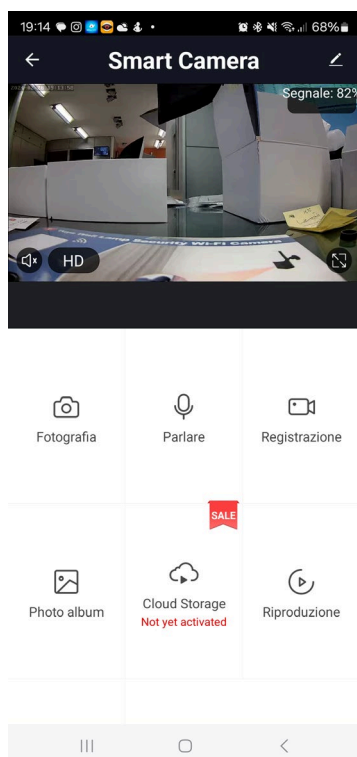
Use the camera

Now that you have configured your camera you can control it with the app. Thanks to the P2P cloud server

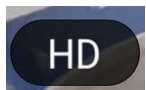
With Tuya you can control it not only within your network, but also through the Internet.

The features provided by the app vary greatly depending on the model, so the

The following indications are for general guidance only.



- Enable listening to audio through the device's microphone



- Select between the main video stream at the highest resolution (HD) and the secondary (SD) lighter. It can be useful to receive SD streaming when connecting with little bandwidth available and FHD images are not received smoothly.



- Switch between normal and full screen view



Fotografia - Take a photo of the live image which is saved in your phone



Parlare - If the camera is equipped with a speaker, by pressing this button, you can talk to

who is near the camera.



Registrazione – Record the images you are viewing into a video that will be saved in the album



Riproduzione Allows you to play videos recorded in the SD memory in the camera

scrolling the timeline and download them. Note that the Tuya system does not allow you to explore with the computer the contents of the SD memory card in the camera because the files are encrypted. You can Play and download video files only through the app.



Photo album Contains live recorded videos and photos saved in the phone



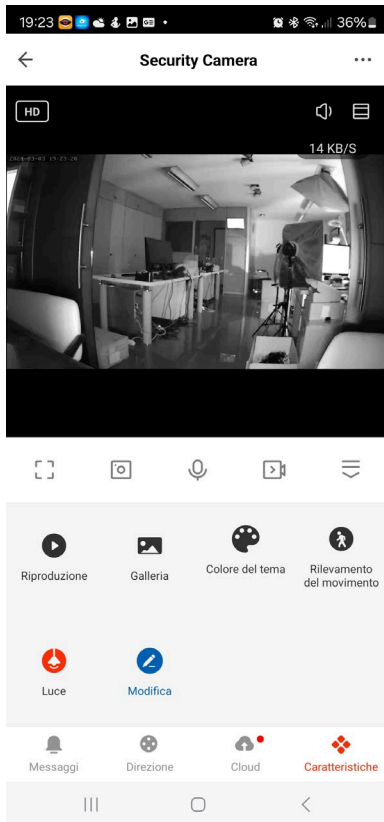
Cloud Storage You can purchase cloud space to save videos



Allarme You can activate motion detection by setting its sensitivity and time schedule.

MOTORIZED CAMERAS

The rotating lens versions have some additional controls.



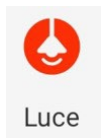
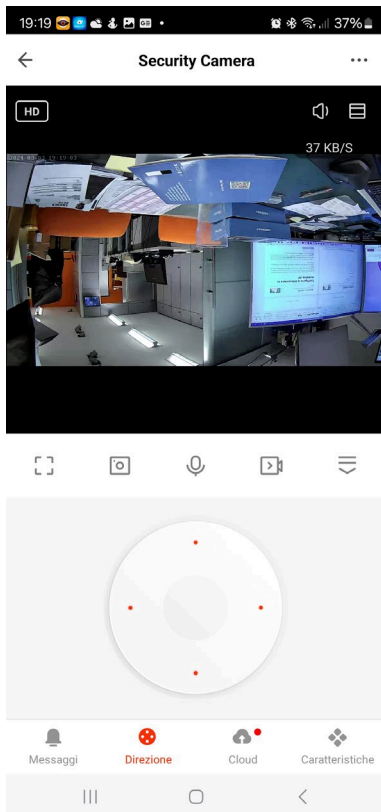
Direzione

Opens the panel for controlling the camera rotation left and right

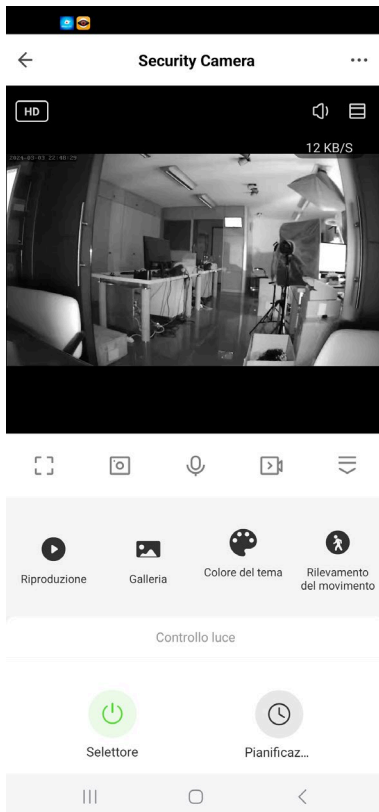
USER MANUAL

Tuya App for DK Series Cameras

Page:25

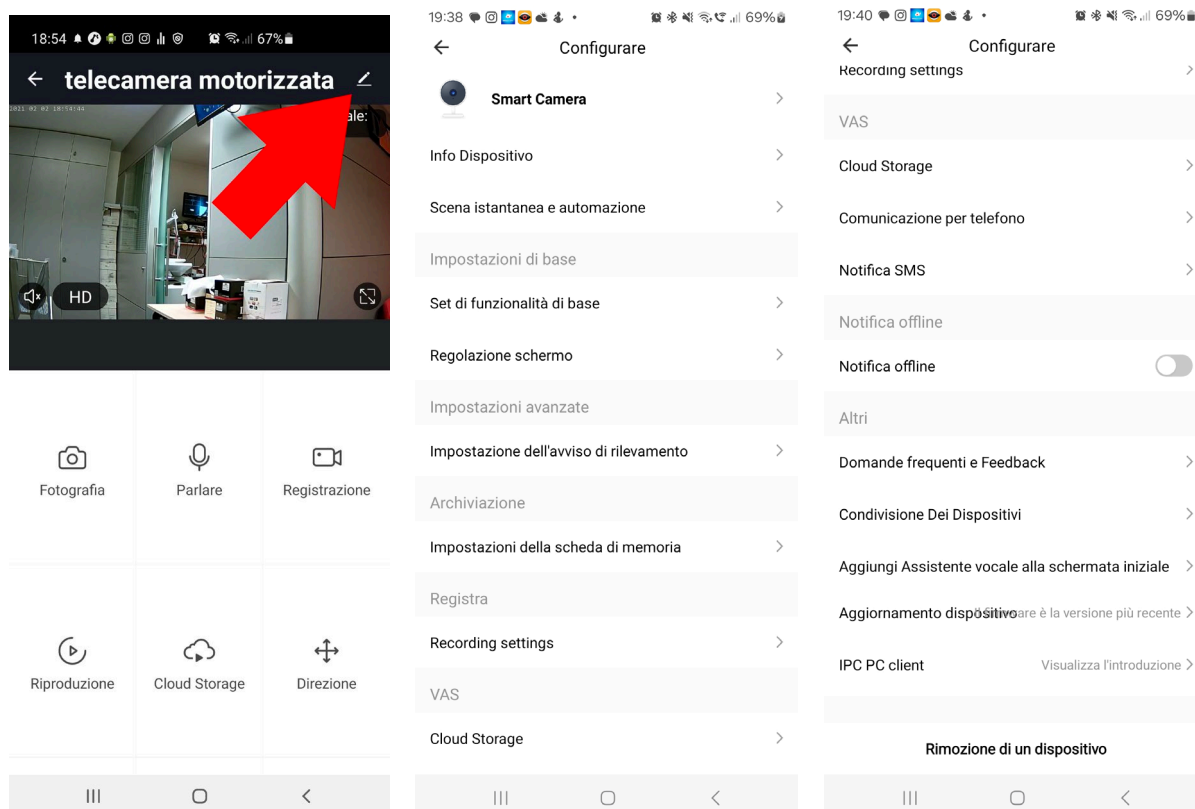


Opens the control of the lamp integrated into the camera. If you enable the lamp it will will behave as expected in the camera's hardware manual.



Settings

From the device's command page you can access some advanced options by pressing the edit icon (pencil) at the top right



DEVICE INFO –Show camera information

INSTANT SCENE–Indicates whether you have entered the device into a smartlive scenario. The app Tuya allows you to predict scenarios to perform automatic actions.

BASIC FEATURE SET –This section contains the basic settings of the camera which may vary depending on the model. Normally the ROTATION is set here OF THE SCREEN, the TIME OVERLAY and the type of ONE-WAY and TWO-WAY AUDIO.

NIGHT VISION FUNCTION–Set the camera's night vision. Normally it is maintains the AUTO function so that the camera shoots in color if there is enough light and switches to monochrome infrared illumination in case of insufficient light. However, it is possible to force the shooting to always be in Color by selecting OFF (shooting with natural light) or always in B/W with IR selecting ON

SCREEN ADJUSTMENT–Contains brightness and contrast adjustments for the video

MOTION DETECTION SETTINGS—Here you set the detection options of the movement, its sensitivity and the time programming. You must activate this detection if you want to receive alarm notifications. For all detections you can set timers so that enable and disable motion detection only in certain time slots, depending on the day of the week. Some cameras also allow you to activate sound detection

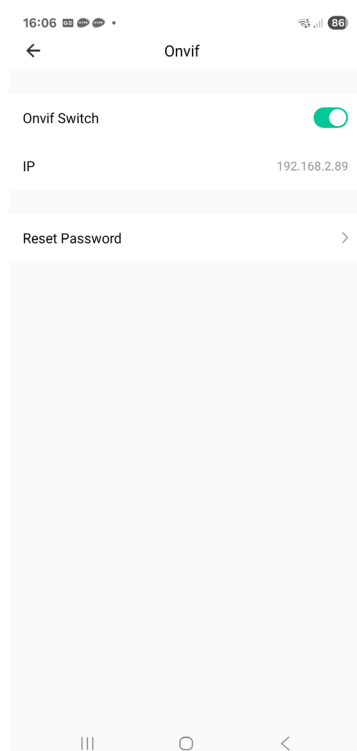
MEMORY CARD SETTINGS—This entry is only available if you have entered in the device an SD memory card. Here you check the status of the SD memory inserted in the camera with Total, Used and Remaining capacity. You can also perform formatting which goes performed the first time you use the card.

RECORDING SETTINGS—You can schedule continuous recording or only in case of motion detection. You also have a time scheduler available for record only during certain periods on an hourly basis.

CLOUD STORAGE—These cameras can save recordings to cloud servers. Here you can purchase cloud storage if you want to use this service.

TELEPHONE COMMUNICATION and SMS NOTIFICATION – The Tuya platform allows you to send SMS notifications case of detection not only push notifications, but also phone calls and SMS. These are services paid services managed by the Tuya server that you can activate by subscription.

ONVIF—Many cameras support Onvif protocol to connect to surveillance NVR. Here you can enable this protocol, set the access password to access the camera and you will also see the network IP address assumed by the camera, to be used for the connection.





OFFLINE NOTIFICATION—Allows you to receive a notification if the camera remains on for 30 minutes offline (not connected to the server).

Amazon Echo Integration

Smart Life integrates seamlessly with Amazon Alexa.

Just download the **SMART LIFE skills** using the Amazon Alexa app to connect Alexa to your Smart Life account. Through the Smart Life skill you can control all our Tuya devices with the Alexa voice commands.

To manage the cameras with Alexa you need to purchase a device with the monitor, such as Echo Show. You can ask Alexa to show the camera you want at any time.



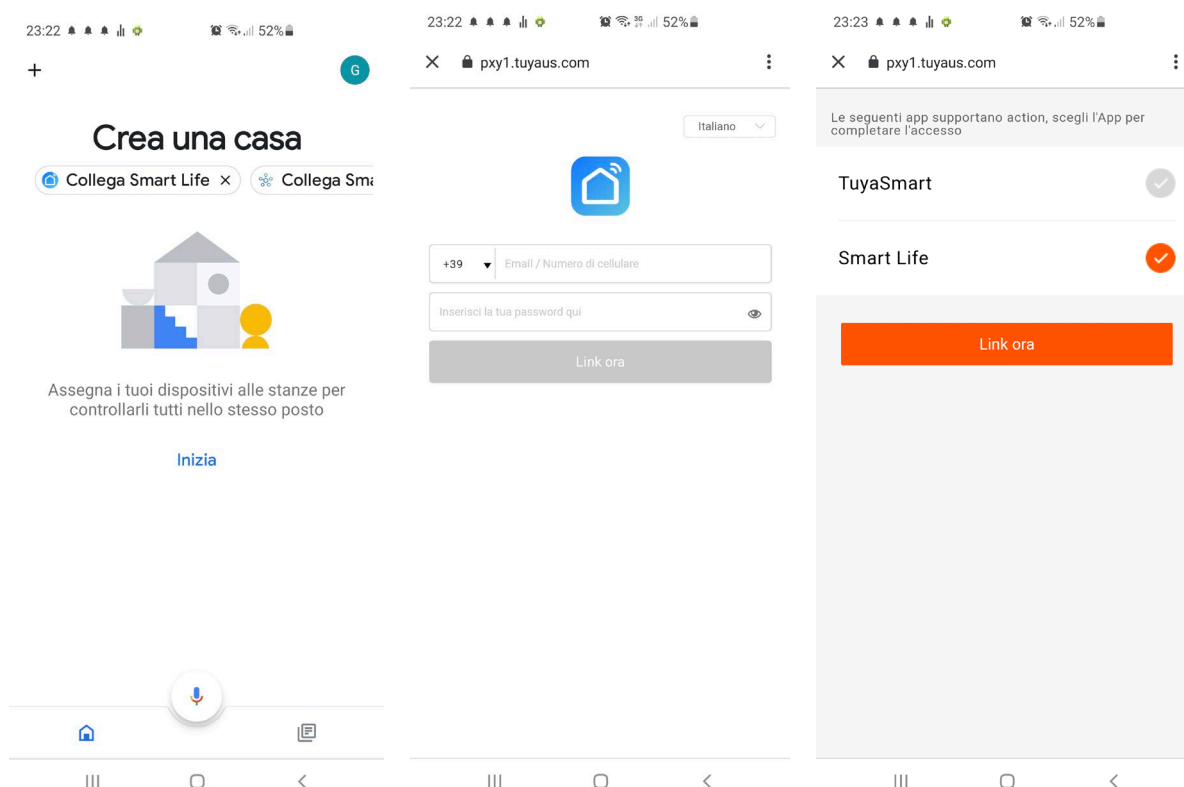
Google Home Integration

Smart Life integrates seamlessly with Google Home

You need to download Google Home and connect Smart Life by entering your account credentials.

To view the cameras you will need a device suitable for viewing for Google

Home, like Chromecast.

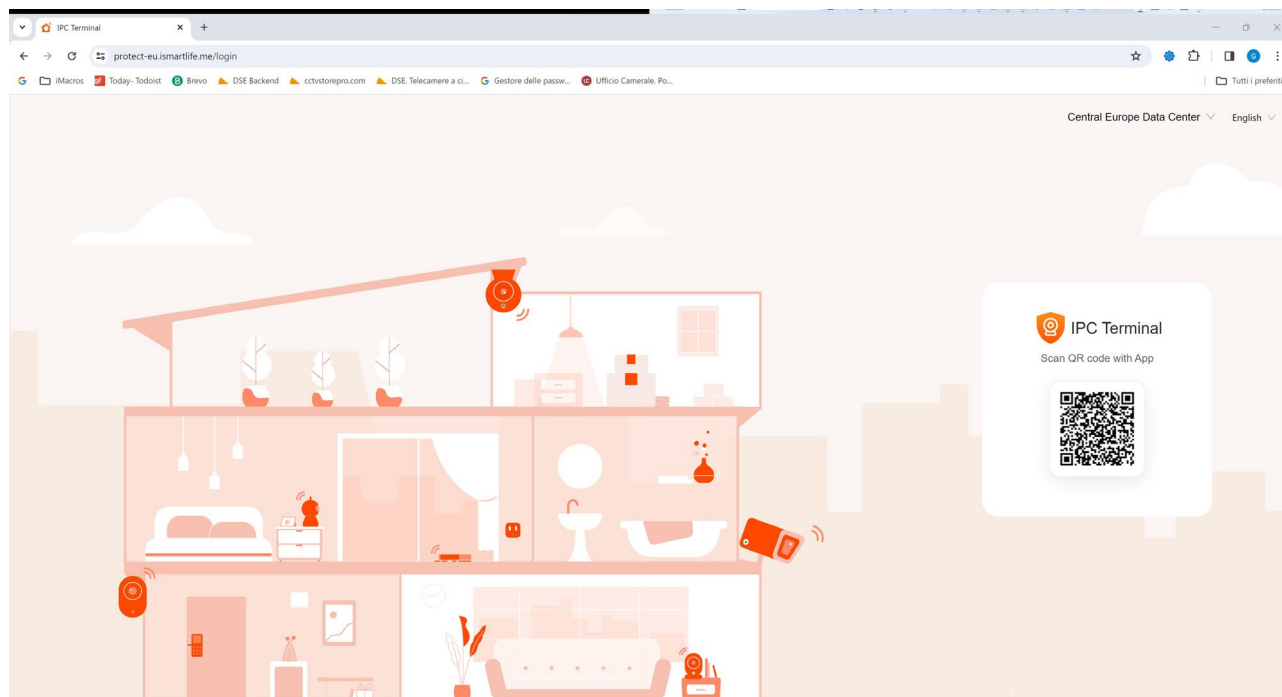




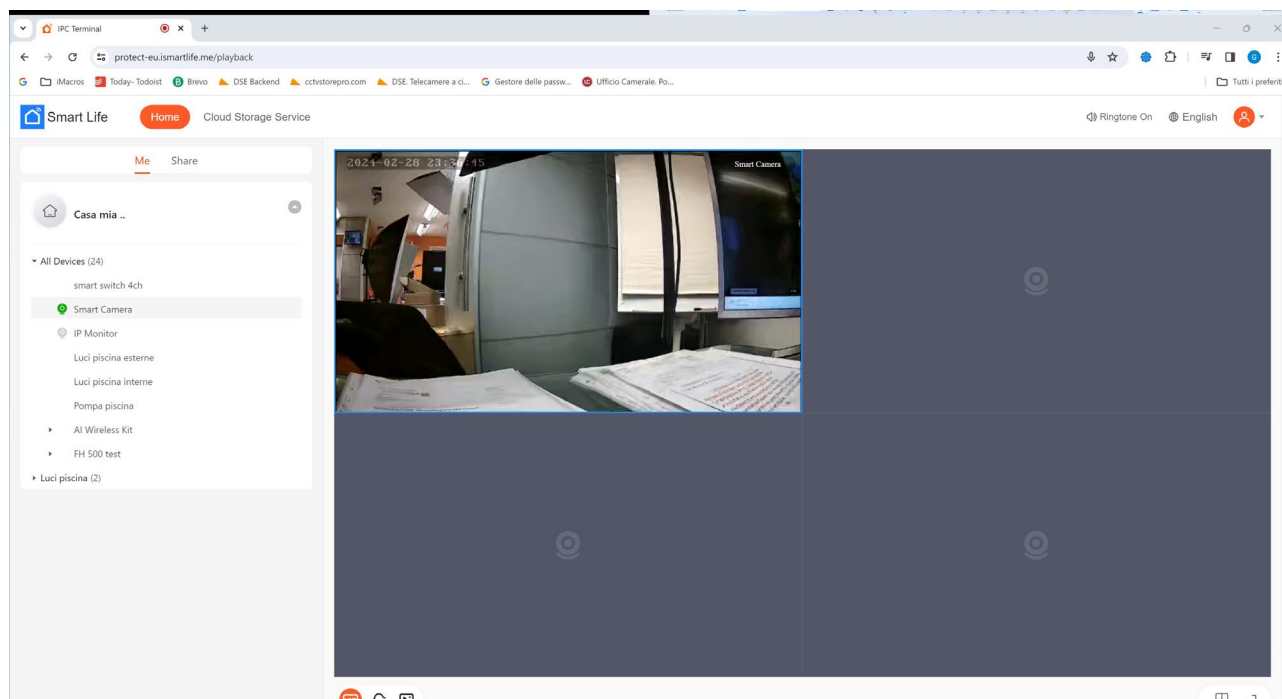
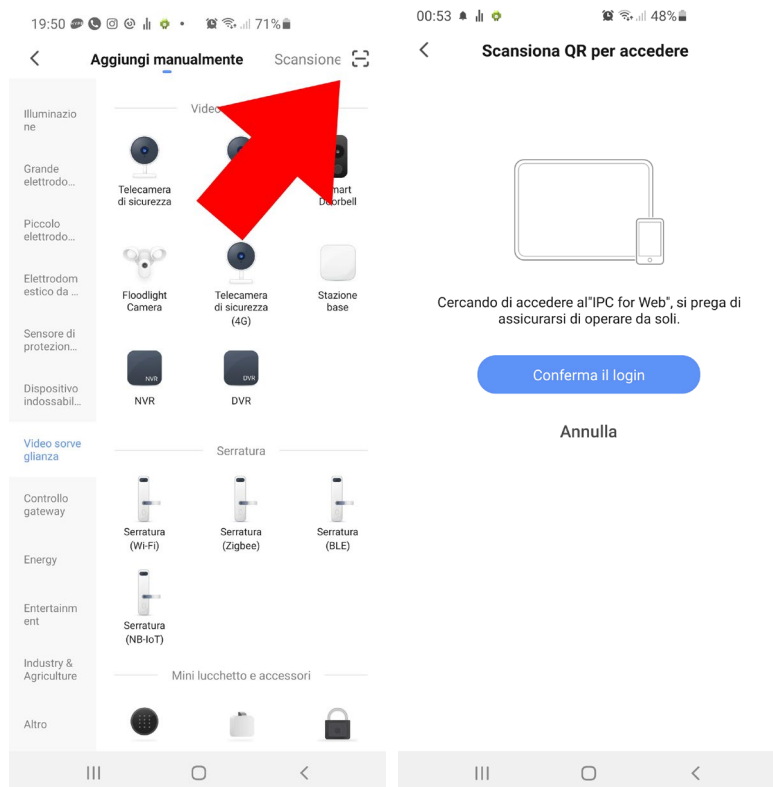
Connection from computer

Some cameras can be controlled from a computer via the website

<https://protect-eu.ismartlife.me> which supports all common browsers

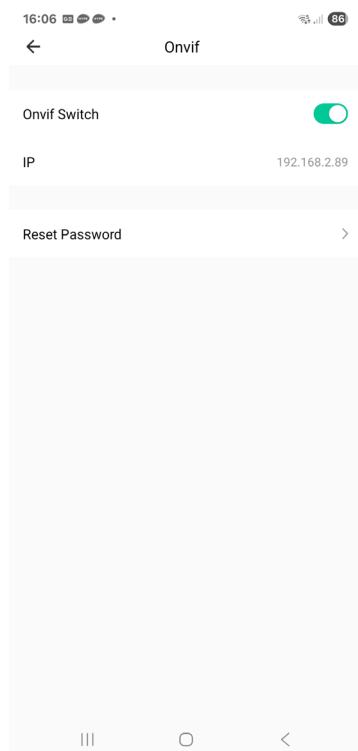


To log in to the site you don't need credentials, all you need is your mobile phone. Open the Smartlife app, tap add device and press the scan button on the top right. Frame the QR code that appears on the site and you will have direct access to all your devices in live viewing and playback



Integration with Onvif NVR

Several Tuya chip cameras also support the onvif protocol which can be activated in the configuration and allows you to connect the camera to an onvif NVR, such as our RK series NVRs for registration.



In the Onvif page you can set the access password to use to access the camera (user: admin). The IP address of the camera in the network is also shown, from use to connect from NVR. The communication port varies depending on the camera and is indicated in the hardware manual.